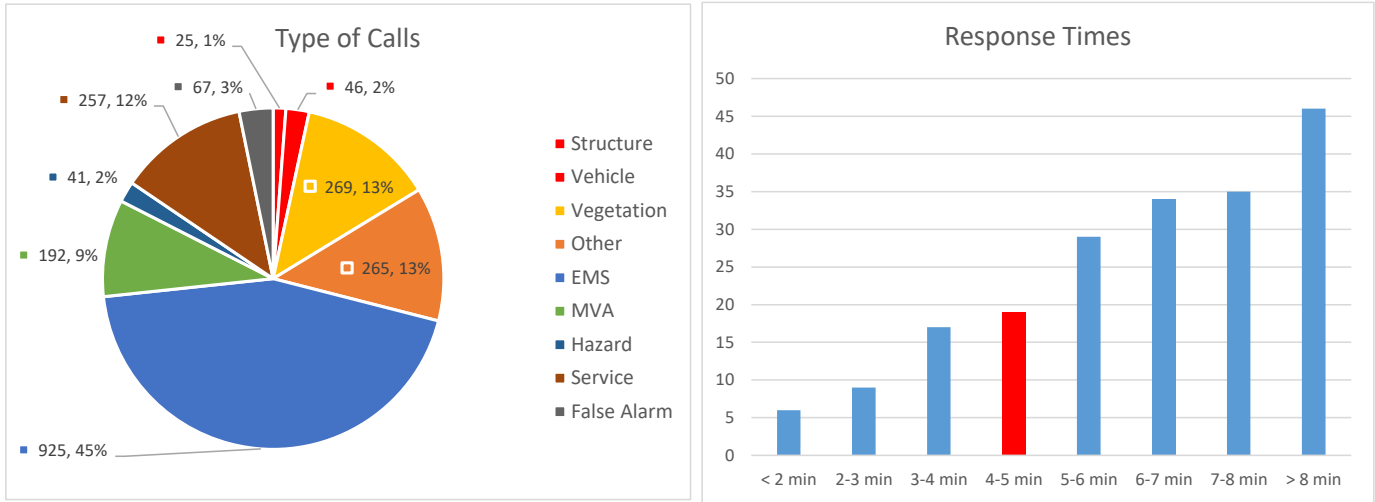




WATERLOO MORADA FIRE DISTRICT ANNUAL ACTIVITY REPORT

2022

EMERGENCY OPERATIONS



Incidents

Annual

2802

Emergency Response - Lights and Siren Incidents

Station	Incidents	Avg Resp Time	Total Inc
1	1182	6:37	42%
2	737	5:50	26%

Non-Emergency

Amount of Responses

Annual

335

Prevention

Annual

Business Inspections	114
Fire Permits Issued	220
Public Education	15
Children	920
Adults	571

Training

Annual 3351 hrs.

Response by Shift

Shift	Count
A	935
B	965
C	902

Dollar Loss

Monthly

Property	\$ 2,063,675
Contents	\$ 452,450
Total Loss:	\$ 2,516,125

E15-1	E15-2	E15-3	BR15-1	WT15-1	BC15	CH15-1	Total
1389	1439	80	221	27	474	10	3640

Stacked Calls

Incidents
Percentage

Annual

833
30%

Aid Given/Received

Given
Received

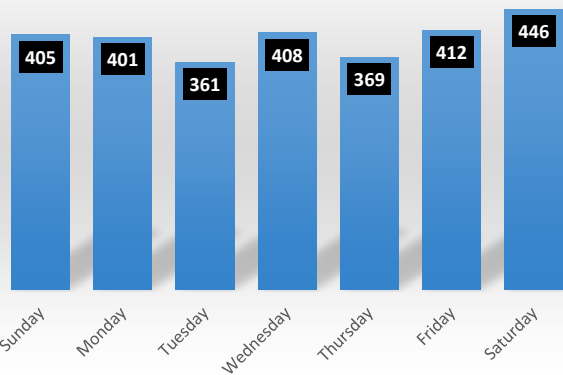
Annual

371
190

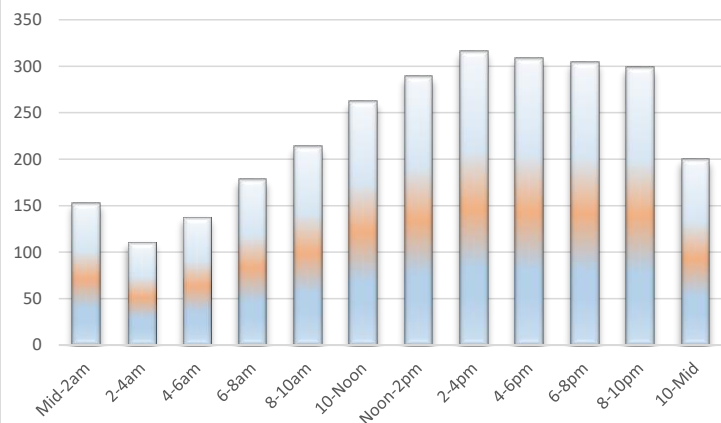
Homeless Related

Annual 542
19%

Incidents by Day of Week



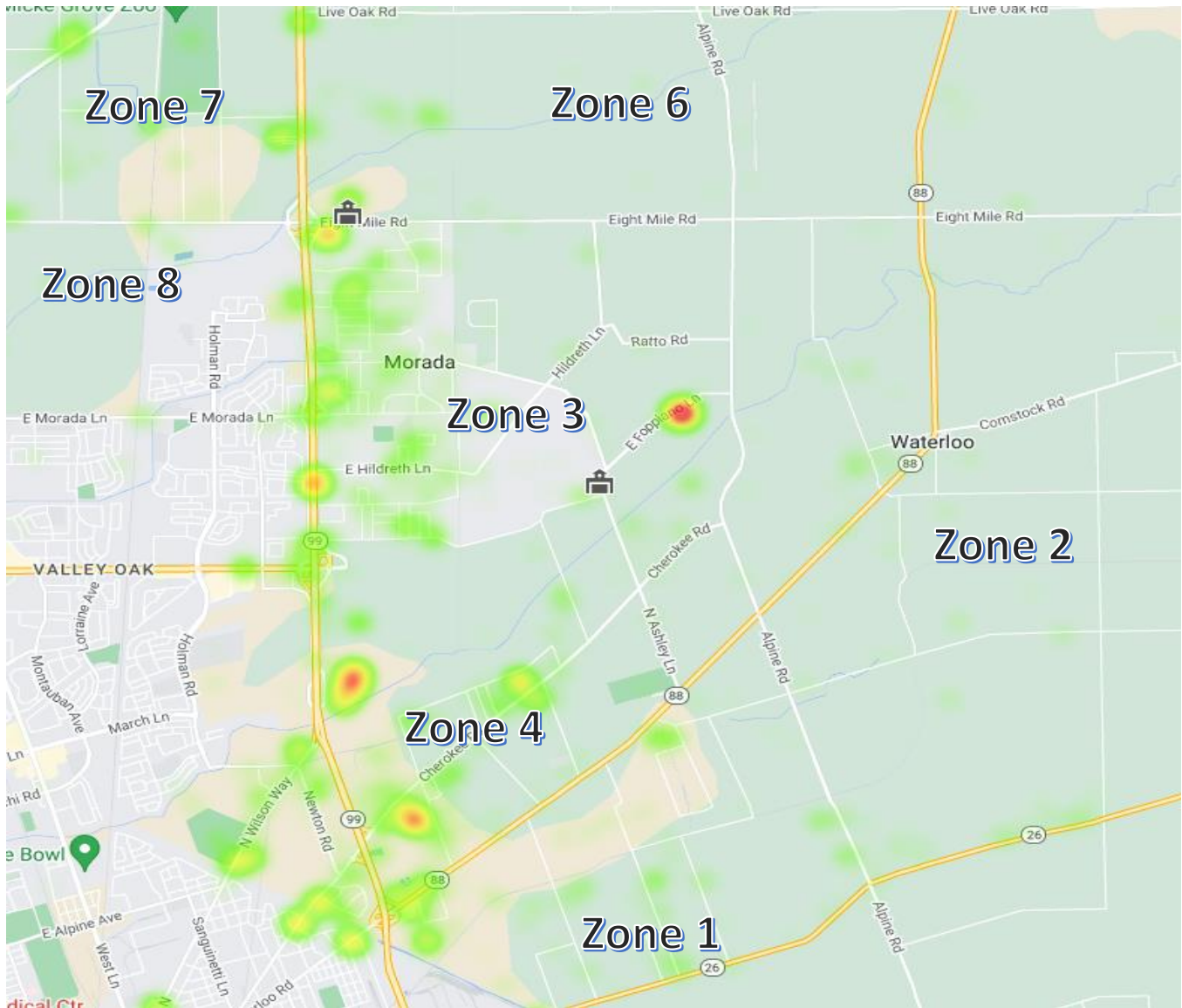
Incidents by Time of Day





WATERLOO MORADA FIRE DISTRICT ANNUAL ACTIVITY REPORT

2022



Incident Density Map

Zone 1	387
Zone 2	123
Zone 3	617
Zone 4	797
Zone 6	264
Zone 7	235
Zone 8	6